**PRODUCT FEATURES:**

Pressure balance valve with diverter.
Service check valve/stop valves.

MATERIALS:

Solid brass, for durability and reliability.

ACCESORIES:

Protector lid with installation level.

INSTALLATION:

½" NPT male water inlets.
½" NPT male water outlets.

ADJUSTMENT LEVEL:

Up to 1 1/16".

COMPATIBLE MODELS:

STSWDMG
STSWDSQ
STRWDEX
STRWDCE

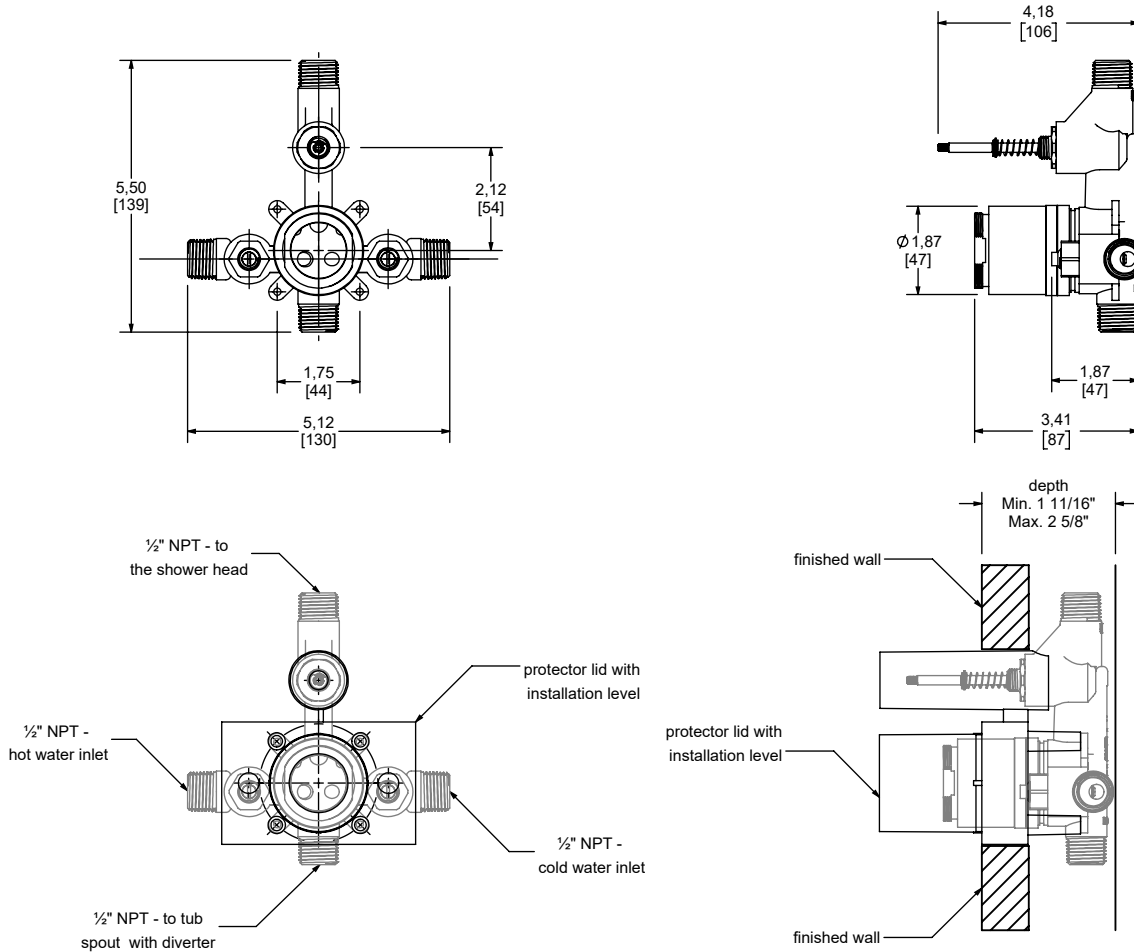
CODES AND STANDARDS:

ASME A112.18.1 / CSA B125.1-2018,
Plumbing Supply Fittings
NSF/ANSI 61/ANSI-2020, Drinking Water
System Components - Health Effects
NSF/ANSI 372-2016, Drinking Water Systems
Components - Lead Content
ASSE 1016/ASME A112.1016/CSA
B125.16

FINISHINGS:

Rough.

Estimated Dimensions Dim. inch. [mm]



FLOW RATE:
5 GPM

NOTES:
Install the product according to the Installation Guide.