

**PRODUCT FEATURES:**

Square floor drain with round
countour drain and bottom outlet 2"
pipe connection.
Easy to install.
Design for easy cleaning.

MATERIALS:

Solid forged brass, for
durability and reliability.
Finishes with ultra-high resistance to
corrosion and tarnishing.

ACCESORIES:

Maintenance wrench.

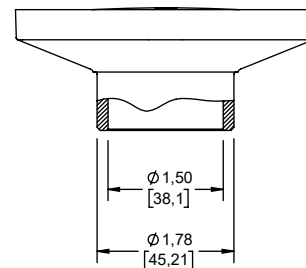
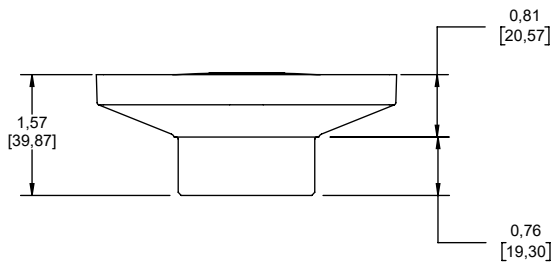
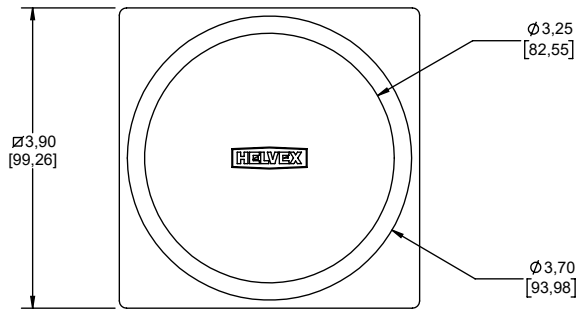
CODES AND STANDARDS:

ASME A112.18.2 / CSA B125.2-2020,
Plumbing Waste Fittings

FINISHINGS:

BB	PVD Brushed Brass
BW	Bright White
MB	Matte Black
PC	Polished Chrome
PCO	PVD Polished Cooper
PG	PVD Polished Gold
PGH	PVD Polished Graphite
PN	PVD Polished Nickel
RG	PVD Rose Gold
SC	PVD Satin Copper
SGH	PVD Satin Graphite
SN	PVD Satin Nickel
SRG	PVD Satin Rose Gold

Estimated Dimensions Dim. inch. [mm]



NOTES:
Install the product according to the Installation Guide.